

NOTES

- ALL COORDINATES ARE IN METRES AND IN TERMS OF GEODETIC 2000 MT. EDEN
- ALL LEVELS ARE IN METRES AND IN TERMS OF THE LANDS AND SURVEY DATUM (MEAN SEA LEVEL) AUCKLAND 1946

LEGEND

- STD. KERB
- KERB & NIB
- MOUNTABLE KERB
- CHANNEL
- FOOTPATH
- CHIPSEAL ONLY
- EDGE OF SEAL
- TRANSITION TO EXISTING
- STREET LIGHTS
- DRIVEWAY

I, MICHAEL STEPHEN SMITH, CMENGNZ CPENG HEREBY BELIEVE ON ALL REASONABLE GROUNDS THAT THE LOCATIONS OF KERBS, CHANNELS, STREET LIGHTS AND FOOTPATHS ARE ACCURATELY PLOTTED IN RELATION TO BOUNDARIES AND IS CORRECT AS THIS INFORMATION HAS BEEN PROVIDED BY THE CONTRACTOR OF THE WORKS - KERRY DINES LTD.

 MICHAEL STEPHEN SMITH DATE
 CMENGNZ CPENG

REV	ISSUED FOR	BY	DATE
A	ISSUED FOR 224c	RJP	04-21
	REVISION DETAILS		

PLOTTED: RJP DRAWN: RJP APPROVED: MSS	DATE: 03-21 DATE: 03-21 DATE: 03-21	THIS DRAWING AND DESIGN REMAINS THE PROPERTY OF, AND MAY NOT BE REPRODUCED OR ALTERED, WITHOUT THE WRITTEN PERMISSION OF CIVILPLAN CONSULTANTS LIMITED. NO LIABILITY SHALL BE ACCEPTED FOR UNAUTHORISED USE OF THIS DRAWING.
---	---	--

CIVILPLAN CONSULTANTS

Level 9, Laidlaw House, 20 Amersham Way, Manukau, Auckland. Phone: 09 222 2445

PROJECT TITLE:
 DFH JOINT VENTURE
 HITCHEN STAGE 12D SUBDIVISION
 POKENO

SHEET TITLE:
 AS BUILT ROADING

ISSUE STATUS: **AS BUILT**

SCALE: (A1/A3) 1:250 / 1:500

SCALE BAR 0 5 10 15 20 25m

DRAWING NUMBER: **136701-12D-AB300** REV: **A**

253



Hitchen Road

Flannery Road

Peacock Place

JOAL 1

LEGEND

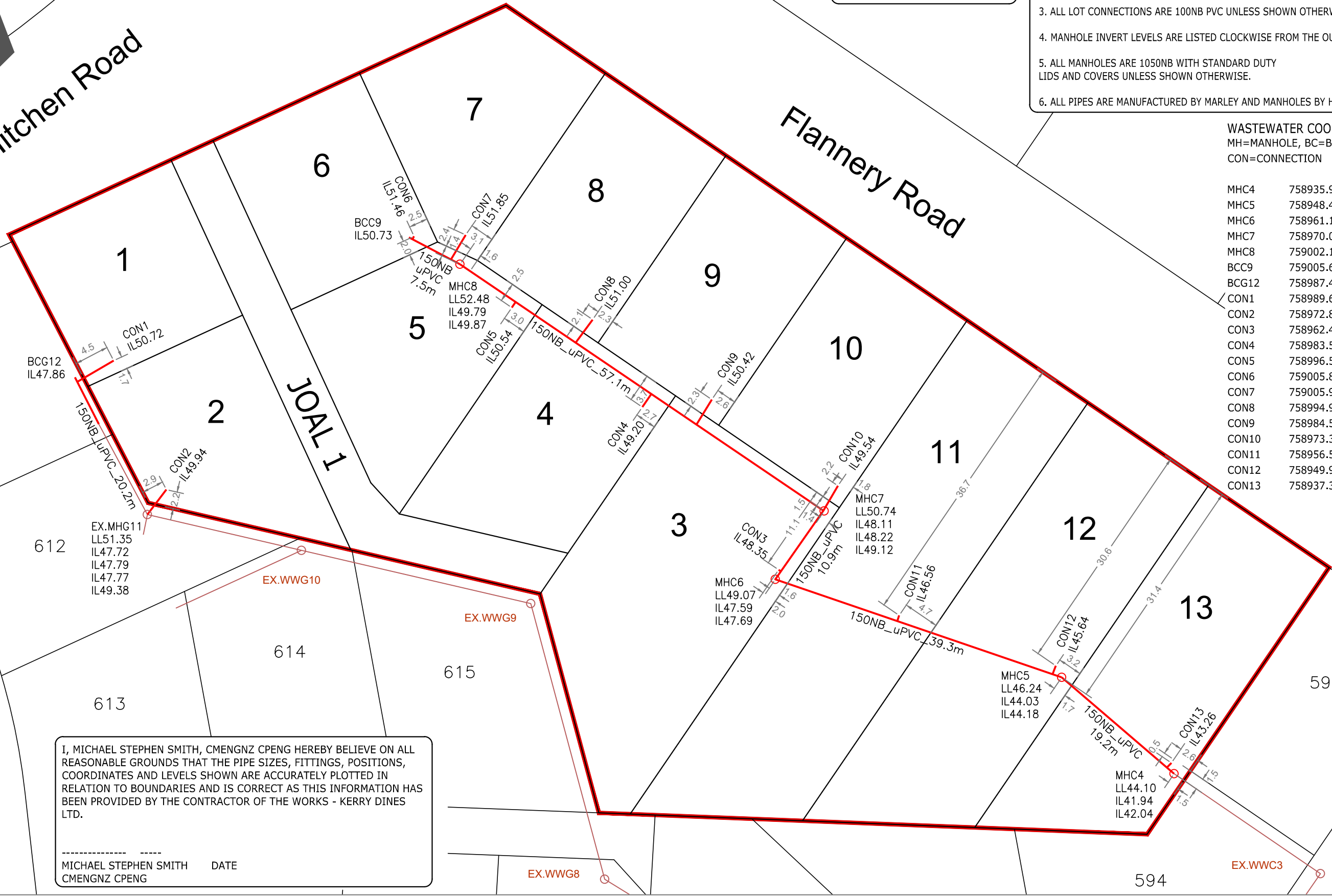
- MANHOLE
- WW LINE
- EX.MANHOLE
- EX.WW LINE

NOTES

1. ALL COORDINATES ARE IN METRES AND IN TERMS OF GEODETIC 2000 MT. EDEN
2. ALL LEVELS ARE IN METRES AND IN TERMS OF THE LANDS AND SURVEY DATUM (MEAN SEA LEVEL) AUCKLAND 1946
3. ALL LOT CONNECTIONS ARE 100NB PVC UNLESS SHOWN OTHERWISE.
4. MANHOLE INVERT LEVELS ARE LISTED CLOCKWISE FROM THE OUTLET PIPE.
5. ALL MANHOLES ARE 1050NB WITH STANDARD DUTY LIDS AND COVERS UNLESS SHOWN OTHERWISE.
6. ALL PIPES ARE MANUFACTURED BY MARLEY AND MANHOLES BY HYNDS PIPES.

WASTEWATER COORDINATES
 MH=MANHOLE, BC=BLANK CAP
 CON=CONNECTION

MHC4	758935.92	422083.26
MHC5	758948.45	422068.64
MHC6	758961.19	422031.40
MHC7	758970.08	422037.76
MHC8	759002.16	421990.39
BCC9	759005.65	421983.73
BCG12	758987.47	421940.30
CON1	758989.64	421945.34
CON2	758972.86	421952.19
CON3	758962.43	422031.81
CON4	758983.59	422014.09
CON5	758996.53	421997.12
CON6	759005.80	421984.41
CON7	759005.97	421991.13
CON8	758994.96	422007.64
CON9	758984.57	422023.14
CON10	758973.36	422039.54
CON11	758956.51	422047.50
CON12	758949.96	422067.88
CON13	758937.32	422082.91



I, MICHAEL STEPHEN SMITH, CMENGNZ CPENG HEREBY BELIEVE ON ALL REASONABLE GROUNDS THAT THE PIPE SIZES, FITTINGS, POSITIONS, COORDINATES AND LEVELS SHOWN ARE ACCURATELY PLOTTED IN RELATION TO BOUNDARIES AND IS CORRECT AS THIS INFORMATION HAS BEEN PROVIDED BY THE CONTRACTOR OF THE WORKS - KERRY DINES LTD.

 MICHAEL STEPHEN SMITH DATE
 CMENGNZ CPENG

REV	ISSUED FOR	RJP	DATE
A	ISSUED FOR 224c	RJP	04-21

PLOTTED:	DATE:	THIS DRAWING AND DESIGN REMAINS THE PROPERTY OF, AND MAY NOT BE REPRODUCED OR ALTERED, WITHOUT THE WRITTEN PERMISSION OF CIVILPLAN CONSULTANTS LIMITED. NO LIABILITY SHALL BE ACCEPTED FOR UNAUTHORISED USE OF THIS DRAWING.
RJP	03-21	
DRAWN:	DATE:	
RJP	03-21	
APPROVED:	DATE:	
MSS	03-21	

CIVILPLAN
 CONSULTANTS

Level 9, Laidlaw House, 20 Amersham Way, Manukau, Auckland. Phone: 09 222 2445

PROJECT TITLE:
 DFH JOINT VENTURE
 HITCHEN STAGE 12D SUBDIVISION
 POKENO

SHEET TITLE:
 AS BUILT WASTE WATER

ISSUE STATUS: **AS BUILT**

SCALE: (A1/A3) 1:250 / 1:500

SCALE BAR 0 5 10 15 20 25m

DRAWING NUMBER: **136701-12D-AB401** REV: **A**

Filepath: P:\APPDATA\LOCAL\AUTODESK\CAD 2020\ENU\TEMPLATE C:\DATA\POKENO\HITCHEN\STAGE 12D\AS BUILT\136701-12-AB401.DWG